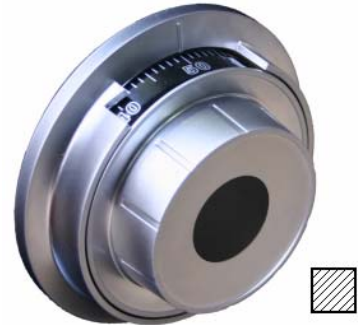


# TOP VIEW

## #MD-40-50-55-70 Dials Technical Manual

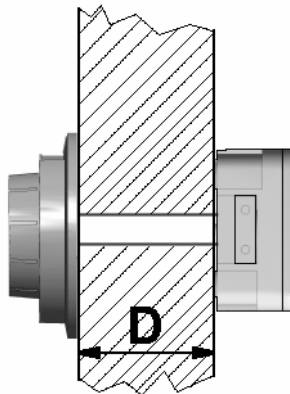


### CHARACTERISTICS

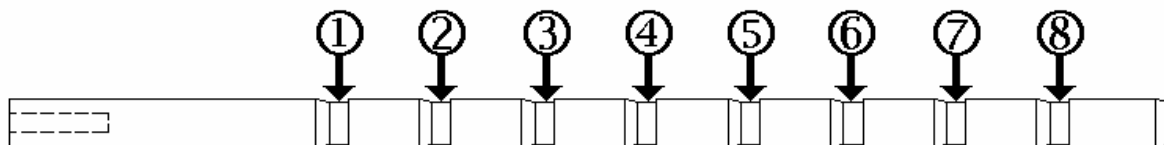
This mechanical dial is delivered with a 6 mm square shaft and can be used only with lock ML-2M. The numbers on the No-Spy dial can only be read up close by the operator. The code numbers cannot be “spied on” from the distance. The dial is available in Textured Black (MD-40-TB), Matte Chrome plated (MD-50-MC), Bright Chrome (MD-55-BC), and Bright Brass (MD-70-BB). The provided shaft can be used for door diameters of up to 125 mm / 5 inch.

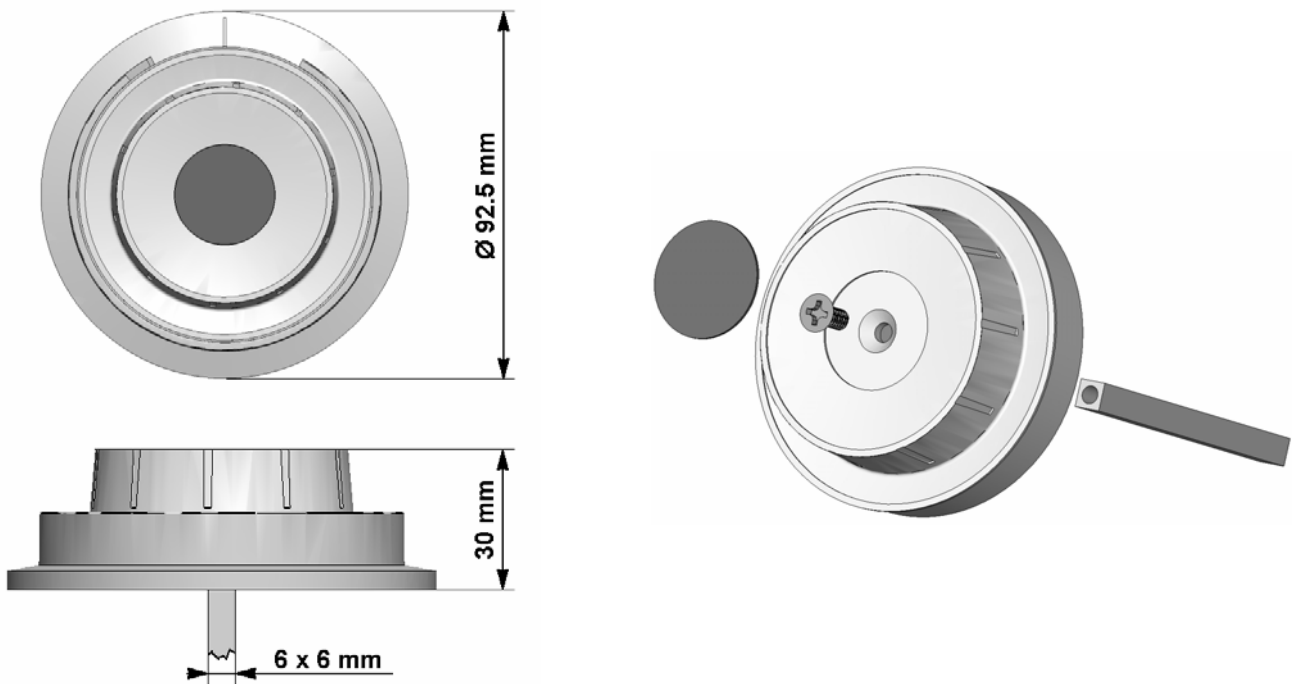
### DIMENSIONS / MOUNTING INSTRUCTION

Measure the distance (**D**) between the mounting surfaces of the dial and the lock (see picture below). Cut the shaft in one of the eight provided grooves. Use the table below to determine in which groove to cut. Do not leave more segments on the shaft than necessary. Normally no deburring is required.



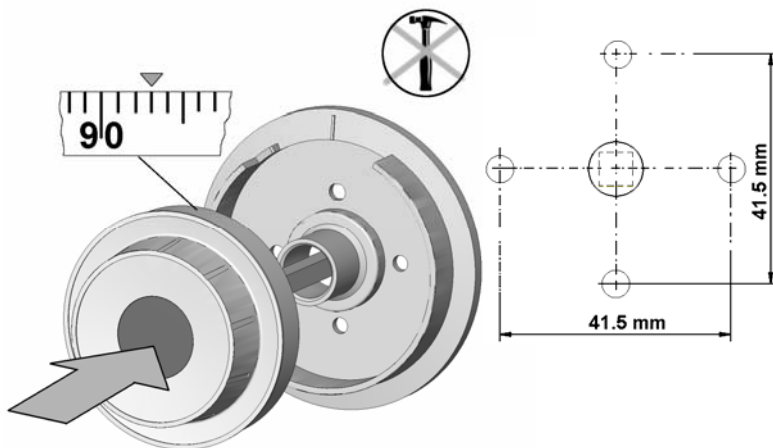
Distance (D) less than		Cut Groove #
23 mm	0.9 inch	1
36 mm	1.4 inch	2
48 mm	1.9 inch	3
61 mm	2.4 inch	4
74 mm	2.9 inch	5
87 mm	3.4 inch	6
100 mm	3.9 inch	7
112 mm	4.4 inch	8





Affix the shaft with the provided screw in the dial and cover the screw with the larger label. Discard the small label.

Install the lock first according to the installation instruction.



The diameter of the spindle hole should be maximal 12 mm. Mount the dial plate with two 8-32" screws (not included) so that the opening index is at 12:00 position.

With the lock in OPEN position (bolt retracted) hold the dial in a way that approximately "93" is lined up with the opening index and push it with some pressure into the lock. The shaft cannot be pulled out.